



ACADEMIC & LEADERSHIP SERVICES

DEPUTY SUPERINTENDENT
DR. NICHOLAS KING

ADMINISTRATIVE ASSISTANT
QUANITA AVERY

BUDGET ANALYST
VICTORIA HENDERSON

ASSISTANT SUPERINTENDENT, SPECIALIZED SERVICES
DEBORAH POLEN-PITMAN, Ph.D

SENIOR EXECUTIVE DIRECTOR, STUDENT SUPPORT SERVICES
LAVERNE MATTOCKS-PERRY, Ed.D

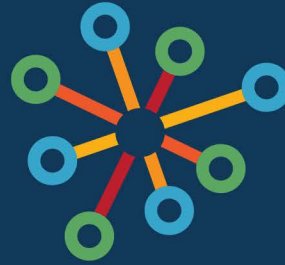
EXECUTIVE DIRECTOR, ELEMENTARY CURRICULUM & INSTRUCTION
LINDA TUGURIAN, Ph.D
EXECUTIVE DIRECTOR, MIDDLE SCHOOL C&I
VACANT
EXECUTIVE DIRECTOR, HIGH SCHOOL C&I
VACANT

EXECUTIVE DIRECTOR, EQUITY
IWINOSA IDAHOR, Ph.D

EXECUTIVE DIRECTOR, EXCEPTIONAL CHILDREN'S SERVICES
KRISTIN BELL, Ed.D

EXECUTIVE DIRECTOR, RESEARCH AND ACCOUNTABILITY
ALBERT ROYSTER, Ed.D

EXECUTIVE DIRECTOR, INFORMATION TECHNOLOGY
JOY MALONE



SPECIALIZED SERVICES

**ASSISTANT SUPERINTENDENT
DEBORAH PITMAN, Ph.D.**

**ADMINISTRATIVE ASSISTANT
NIKKEYA MURCHISON**

**DIRECTOR,
STUDENT ASSIGNMENT
MELODY MARSHALL**

**DIRECTOR,
ENGLISH AS A SECOND
LANGUAGE
SASHI RAYASAM**

**DIRECTOR,
CAREER TECHNICAL
EDUCATION
DARIAN HARRIS**

**DIRECTOR,
MAGNET & CHOICE
PROGRAMS
VACANT**

**DIRECTOR,
ARTS EDUCATION
LESTER TURNER**

**DIRECTOR,
EARLY EDUCATION
KAREN THOMPSON**

**DIRECTOR,
ATHLETICS, PE, AND
DRIVER'S EDUCATION
DAVID HACKNEY**

**DIRECTOR,
ADVANCED ACADEMICS
LAURA PARROT**

**COORDINATOR,
STUDENT ASSIGNMENT
TRANSITIONS
JOY BINGHAM**

**CUSTOMER SERVICE
SPECIALIST
VELINA JONES**
**MAGNET SCHOOL
TECHNICIAN
TANYA
HAWKINS-JOHNSON**
**STUDENT TRANSFER
TECHNICIAN
SANDRA SUITT**

**STUDENT RECORDS
MANAGER
DONNA HAMM**

**RECORDS TECHNICIANS
THWANDA SMITH-TILLEY
AMY BASS**

**COORDINATOR,
WHITTED PRE-K CENTER
LATOYA MCCRIMMON**

**COORDINATOR,
DRIVER'S EDUCATION
SUSAN CLEMENTS**

**COORDINATOR,
ADVANCED ACADEMICS
JAMEL
ANDERSON-RUFF**



**SENIOR EXECUTIVE DIRECTOR,
 STUDENT SUPPORT SERVICES
 LAVERNE MATTOCKS-PERRY, Ed. D.**

**RECEPTIONIST
 KATHY CANADA**

**ADMINISTRATIVE ASSISTANT
 ASHLEY BALLARD**

**DIRECTOR OF STUDENT
 WELLNESS & ADVOCACY
 TOMEKA
 WARD-SATTERFIELD**

**DIRECTOR OF STUDENT
 ALTERNATIVES & SUPPORTS
 MELISSA
 WATSON, Ed.D.**

**DIRECTOR OF INTEGRATED
 ACADEMIC AND
 BEHAVIOR SYSTEMS &
 504 COORDINATOR
 AMY MILLER**

**PRINCIPAL,
 HOSPITAL SCHOOL
 AND HOMEBOUND PROGRAMS
 MICHAEL SOMERS**

**STOP VIOLENCE PREVENTION
 GRANT DIRECTOR
 GRADESA
 LOCKHART, Ed.D.**

**LEAD NURSE
 TRICIA HOWARD**

**SCHOOL COUNSELING
 COORDINATOR
 CHERICE ARTIS**

**MENTAL HEALTH/
 SEL COORDINATOR
 GLORIA SANCHEZ**

**LEAD SOCIAL WORKER
 KAFI HILL**

**CO-LOCATED MENTAL
 HEALTH SPECIALIST
 AMARIS SAMPSON**

**WHOLE SCHOOLS
 WELLBEING SPECIALIST
 VACANT**

**BEHAVIOR SUPPORT &
 ALTERNATIVE SUSPENSION
 KENDRA SUGGS- SHEALEY**

**MCKINNEY-VENTO
 COORDINATOR
 EBONY ROSS**

**DISTRICT FAMILY LIAISON
 DARLENE HAMPTON**

**NEW DIRECTIONS
 COORDINATOR
 ERICKA BOONE**

**SECTION 504
 COORDINATORS**

**MTSS SPECIALIST
 SONYA WEST**

**MTSS SPECIALIST
 FELICIA SLEDGE**

MTSS FACILITATORS

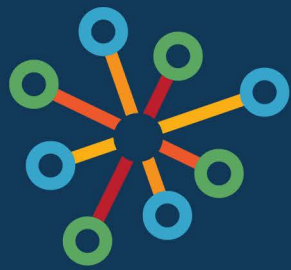
**RESTORATIVE PRACTICE
 COORDINATORS**

HOSPITAL SCHOOL STAFF

**HOMEBOUND
 TEACHERS**

VERITAS TEACHERS

**DETENTION CENTER
 TEACHERS**



K-12 CURRICULUM & INSTRUCTION

**EXEC. DIRECTOR,
ELEMENTARY C&I
DR. LINDA TUGURIAN**

**EXEC. DIRECTOR,
MIDDLE SCHOOL C&I
GABRIELLE HALL**

**EXEC. DIRECTOR,
HIGH SCHOOL C&I
CRYSTAL TAYLOR-SIMON**

**ADMINISTRATIVE ASSISTANT
EMMANUEL GBEDEE**

**NCDPI EARLY
LITERACY SPECIALIST
KATHLEEN JAMES**

**MEDIA COORDINATOR
LEADS - SCHOOL BASED**

**TEACHING &
LEARNING COACHES
SCHOOL BASED**

**COORDINATOR OF
ACADEMICS
VACANT**

**DIRECTOR OF HUMANITIES
DR. CICILY
MCCRIMMON**

**DIRECTOR OF MATHEMATICS
& SCIENCE
LIZ MOFFITT**

**DIRECTOR OF DIGITAL
TEACHING & LEARNING
RONALD WAHLEN**

**ENGLISH LANGUAGE
ARTS SPECIALISTS
SARAH MOON, K-5
BETH SPATARO, 6-8
HEIDI PEREZ, 9-12**

**MATHEMATICS SPECIALISTS
STEVEN HARRISON, K-5
STEPHANIE BROCK, K-5
ALINA CASTILLO, 6-12
KENYA LAWRENCE, 6-12**

**DIGITAL TEACHING &
LEARNING COACHES
SHANIQUA HOOD
KENNETHA HOPKINS
VACANT**

**LITERACY INTEGRATION
FACILITATORS
DANIELLE HOWARD,
K-2 LITERACY**

**DISTRICT MATH COACH
KENYA LAWRENCE, 9-12**

**eLEARNING COORDINATOR
ALLYN SIMON**

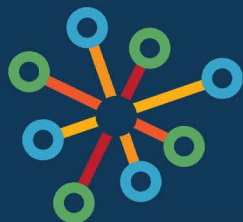
**COORDINATOR OF DLI &
GLOBAL LANGUAGES
VICTOR HIRALDO**

**SCIENCE SPECIALISTS
AMANDA BOWERS, K-5
EMMA REFVEM, 6-12**

**TECHNOLOGY INTEGRATION
SPECIALIST
JERRY WILLIAMSON**

**SOCIAL STUDIES SPECIALIST
CHARLENE
MARTIN-KLEIN, K-12**

**PART TIME
DISTRICT COACHES
TERRI RAY, 6-8 SCIENCE**



EXCEPTIONAL CHILDREN

**EXECUTIVE DIRECTOR,
EXCEPTIONAL CHILDREN'S SERVICES
KRISTIN BELL, Ed. D.**

**DATA ANALYST/ECATS
ROSEMARY MILLER**

**TREASURER
SHENISE STEWART**

**ADMINISTRATIVE ASSISTANT
TAMMY KNUDSEN**

**DIRECTOR, PRE-K EC
TINA CLAYTON**

**DIRECTOR, ELEMENTARY EC
WENDY VAVROUSEK**

**DIRECTOR, SECONDARY EC
STACY BURNS**

**EC DIRECTOR
SPECIAL PROGRAMS &
BEHAVIOR SUPPORT
KRISTA SAUNDERS**

EC LEADS

**SCHOOL PSYCHOLOGY
WAYDE JOHNSON**

**LEAD TEACHER OF
BLIND/VISUALLY IMPAIRED
BRYAN WATERS**

**ADAPTED PE
STACI SHARP**

**LEAD BLIND/VISUALLY
IMPAIRED
DENISE NELSON**

**SPEECH LANGUAGE
PATHOLOGY
TAHISHA BISHOP**

**AUDIOLOGY
NICOLE JONES
SHELBY ROITHMAYR**

**PHYSICAL THERAPY
SHERYL BROADRIGHT**

**DEAF/HARD OF HEARING
INDIA DAVIS
SHAKIRA ANDERSON**

**OCCUPATIONAL THERAPY
LENORE CHAMPION**

**ASSISTIVE TECHNOLOGY
TONJA RECKTENWALD**

**ASSISTANT LEAD SIGN
LANGUAGE INTERPRETER
CHARLES STORES**

**FOREIGN LANGUAGE
INTERPRETER
MELINDA LANE**

**SEE PAGE 2 FOR
FULL PRE-K EC
CHART**

**ELEMENTARY
LEAD EC FACILITATOR
ELAINA BRADLEY**

**SECONDARY
LEAD EC FACILITATOR
JAMIE BOWERS**

**BEHAVIOR
SUPPORT SPECIALIST
VACANT**

**ADAPTED
CURRICULUM SPECIALIST
LORI PLATKO**

**ADAPTED
CURRICULUM SPECIALIST
KELLY ROBERTS**

**ADAPTED
CURRICULUM SPECIALIST
MONIQUE BONNER**

**VOCATIONAL SPECIALIST
CHRISTOPHER
NORWOOD**

**ELEMENTARY INCLUSIVE
PRACTICES SPECIALIST
AJALYN BAKER**

**SECONDARY INCLUSIVE
PRACTICES SPECIALIST
AMBER CLINE-RABAH**

**ELEMENTARY
EC FACILITATORS**

**SECONDARY
EC FACILITATORS**

**EC BEHAVIOR
TECHNICIANS**



EXCEPTIONAL CHILDREN PRE-K CHART

**DIRECTOR, PRE-K EC
TINA CLAYTON**

EC INSTRUCTIONAL
COORDINATOR
BEATRICE SPRINGS

COORDINATOR,
CHILD FIND INTAKE
LESLIE GREENE

**THREE PRESCHOOL
ASSESSMENT TEAMS**
(PURPLE TEAM, GREEN TEAM,
BLUE TEAM)

EXCEPTIONAL CHILDREN
FACILITATORS
**MELISSA ANDERS
RENEE HARRIS**

ITINERANT TEACHERS
SARAH ASHLEY
ROSEMARIE BAKER
LYNDA COATES
TA'STACIA COVINGTON
TENISHA CROMARTIE
LAMISA DUMAS
LORI HOLDER
LATITIA LILES
MELISSA NEAL
VACANT

SPEECH LANGUAGE
PATHOLOGISTS
BETHANY PERGERSON
RACHEL RHYNE

PSYCHOLOGISTS
CATHERINE BONEY
CARA STEINBURG

OCCUPATIONAL THERAPIST
MILISA DAPPER

PHYSICAL THERAPIST
SHERRY BROADRIGHT



EARLY EDUCATION

**DIRECTOR,
EARLY EDUCATION
DR. LATOYA MCCRIMMON**

**ADMINISTRATIVE ASSISTANT
FRANCHESCA DAYE**

**PRESCHOOL
INSTRUCTIONAL COACHES
APRIL WASHINGTON
QUSHANNA GLASS**

**UNIVERSAL PRE-K
FACILITATOR
STEPHANIE HUMPHREY**

**WHITTED PRE-K CENTER
COORDINATOR
LATOYA MCCRIMMON**

**TRANSITION TO
KINDERGARTEN FACILITATOR
VACANT**



WHITTED SCHOOL

**DIRECTOR, EARLY LEARNING
KAREN THOMPSON**

**WHITTED SCHOOL
COORDINATOR
DR. LATOYA MCCRIMMON**

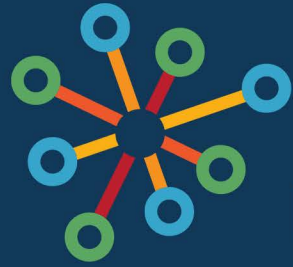
**TREASURER
SHANNON CERES**

TEACHERS

**SHAHLAA ABUGROUN
GEORGETTE TWITTY
ASHAWNTA HOCKADAY
HEIDI BELL
DANIEL MABINI
ASHLEY EATMON
GWENDOLYN WHITLEY
KAREN CRAIG
MELISSA EIMER**

TEACHER ASSISTANTS

**SHAENA JONES
JASMINE PATILLO
SUZAN BELVIN
MICHELE D WRIGHT
SHARLENE CAMERON
SASHA HUMPHREY
TIFFANY WOODS-CAMERON
CAROL NIXON
LAUREN BRIGGS
VACANT**



ENGLISH LEARNER SERVICES

**DIRECTOR
SASHI RAYASAM**

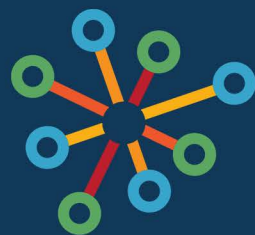
**ADMINISTRATIVE ASSISTANT
DANIELLE DUNKER**

**ESL REGISTRATION
AND TESTING
MARTHA GENSEMER-RAMIREZ
NIKOS CHREMOS
LORENA LOPEZ ALAS
LUZ CATES**

**BILINGUAL GRADUATION
COACHES
MARIA JIMENEZ-SANCHEZ
KATTY NINO
KAREN KEIM
AVILAMAR BASTIDAS-CASTILLO**

**EL INSTRUCTIONAL
FACILITATOR (ELEMENTARY)
KATELIN MCCLURE**

**EL INSTRUCTIONAL
FACILITATOR (SECONDARY)
WENDY LOVE**



DURHAM PUBLIC SCHOOLS
**OFFICE OF
EQUITY**

**SENIOR EXECUTIVE DIRECTOR,
EQUITY AFFAIRS AND
PROGRAM EVALUATION
IWINOSA IDAHOR, Ph.D**

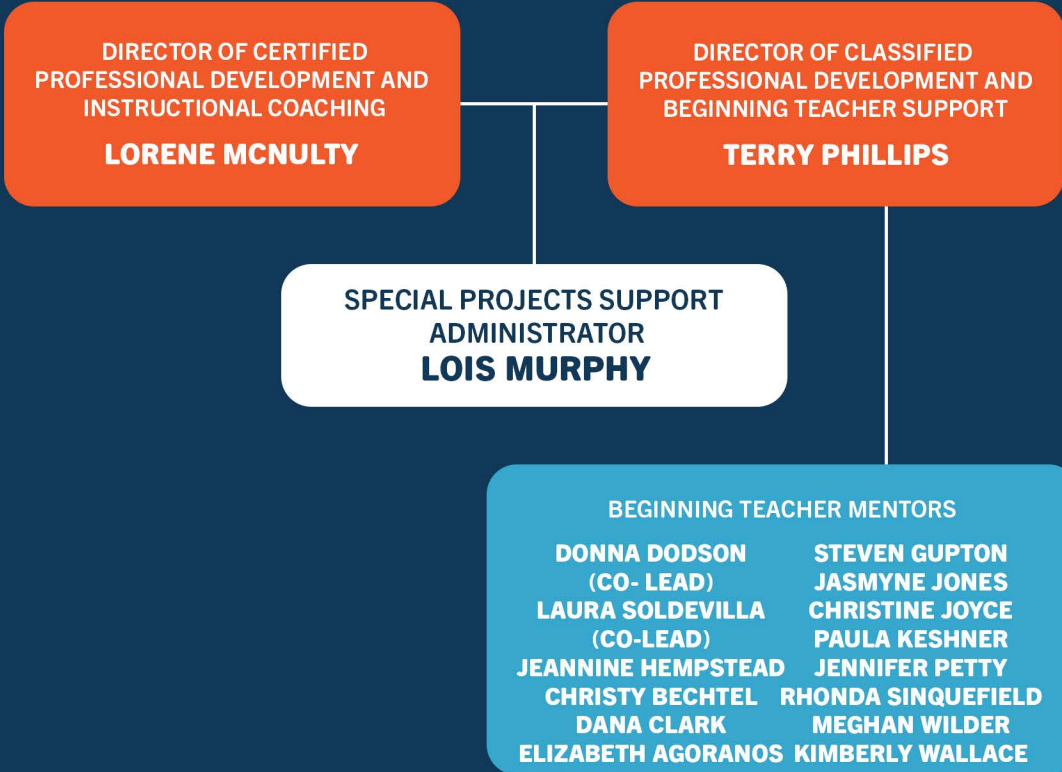
**SPECIAL PROJECTS SUPPORT
ADMINISTRATOR
LOIS MURPHY**

**STUDENT ENGAGEMENT &
OPPORTUNITY COORDINATOR,
EQUITY AFFAIRS
VACANT**

**EQUITY LEADERSHIP & STRATEGY
COORDINATOR, EQUITY AFFAIRS
KEAUNDR A ROBINSON**



DURHAM PUBLIC SCHOOLS
**LEADERSHIP
DEVELOPMENT**





**EXECUTIVE DIRECTOR,
INFORMATION TECHNOLOGY
JOY MALONE**

**ADMINISTRATIVE ASSISTANT
KRYSTAL MERRITT**

**DIRECTOR,
IT OPERATIONS
PAUL MIJUMBI**

**ASSET WAREHOUSE
MANAGER
ERICK HUSTON**

**DIRECTOR, IT SUPPORT
ANGELA ATKINSON**

**ENTERPRISE
APPLICATIONS**
DATA WAREHOUSE
MANAGER
BARISO SORA
DATA WAREHOUSE
DEVELOPER
**DEEPTI
CHERUKWADA**

**SYSTEMS
ADMINISTRATION**
JR. SYSTEMS ADMIN
MORCIRE BANGIURA
JR. SYSTEMS ADMIN
CALVIN NG
SYSTEMS ADMIN
REYMAN PEJERA
SYSTEMS ADMIN
AJEESH CHERIN

**NETWORK
INFRASTRUCTURE**
JR. NETWORK ENGINEER
ALEX SURH
NETWORK ENGINEER
OMAR PERKINS
NETWORK ENGINEER
SCOTT WILLIAMS

**IT PROJECT MANAGER
ANYA ZEIDMAN**

IT ASSET CONTROL
WAREHOUSE TECHS
**BONFACE
GILBERT (TIER I)**
**AUGUSTUS
SIKO (TIER I)**
DELVEON WOODS (SA)

AUDIO VISUAL
SR. AUDIO VISUAL
TECHNICIAN
JAVIN GRIFFIN
AUDIO VISUAL TECHNICIAN
SHATASHA BONEY

**ELEMENTARY, HAMLIN,
IGNITE!**
TEAM LEAD
ANTHONY MERRITT
**PAUL SALDANA
(TIER II)**
**KENDALL PHILLIPS
(TIER II)**
**REUBEN AHUKANA
(TIER I)**
**KEANDRA WALKER
(TIER I)**
**JARED BONEY
(TIER I)**

**MIDDLE, HIGH, SECONDARY,
ADMIN**
TEAM LEAD
MISAEEL CRUZ
**ANDREW
BUHRMEISTER (TIER II)**
**NASIBA CHARYYEVA
(TIER II)**
**GINIKA NWOKO
(TIER II- SOUTHERN)**
VACANT (TIER I)
**CAMELLIA
FLEMING (TIER I)**
**KENDRICK
PARRISH (TIER I)**
**CHRISTOPHER PERRY
(TIER I)**

***CONTRACT/CONSULTANT/TEMP WORKERS MAY BE ASSIGNED TO SUPPORT IN SOME AREAS.**